



Recommendations for Cassava Maize Intercropping



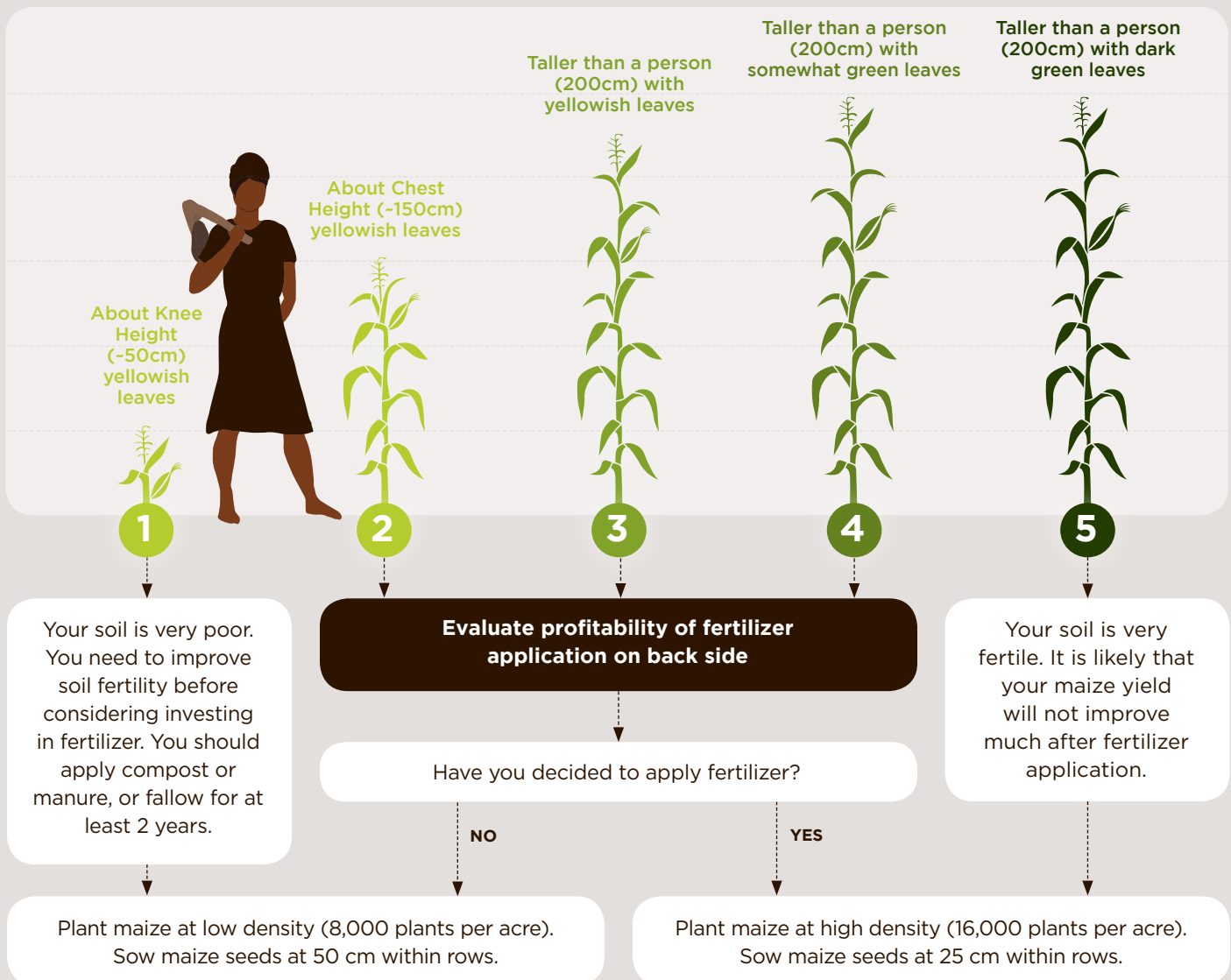
Plant an erect variety of cassava like TME 419 or TMS 98/0581. We recommend obtaining disease-free cuttings from an accredited source.

- Plant your cassava in rows that are 1 m apart and plant cuttings at 0.8 m within the row (density of 5,000 cassava plants per acre)
- If your field is ridged, plant your cassava on the crest of the ridge

Plant an early-maturing maize variety that fully matures in 90 to 95 days, like SAMMAZ 35 (yellow) or SAMMAZ 48 (white). Ask your local agrodealer or extension agent for advice on the best variety for your area.

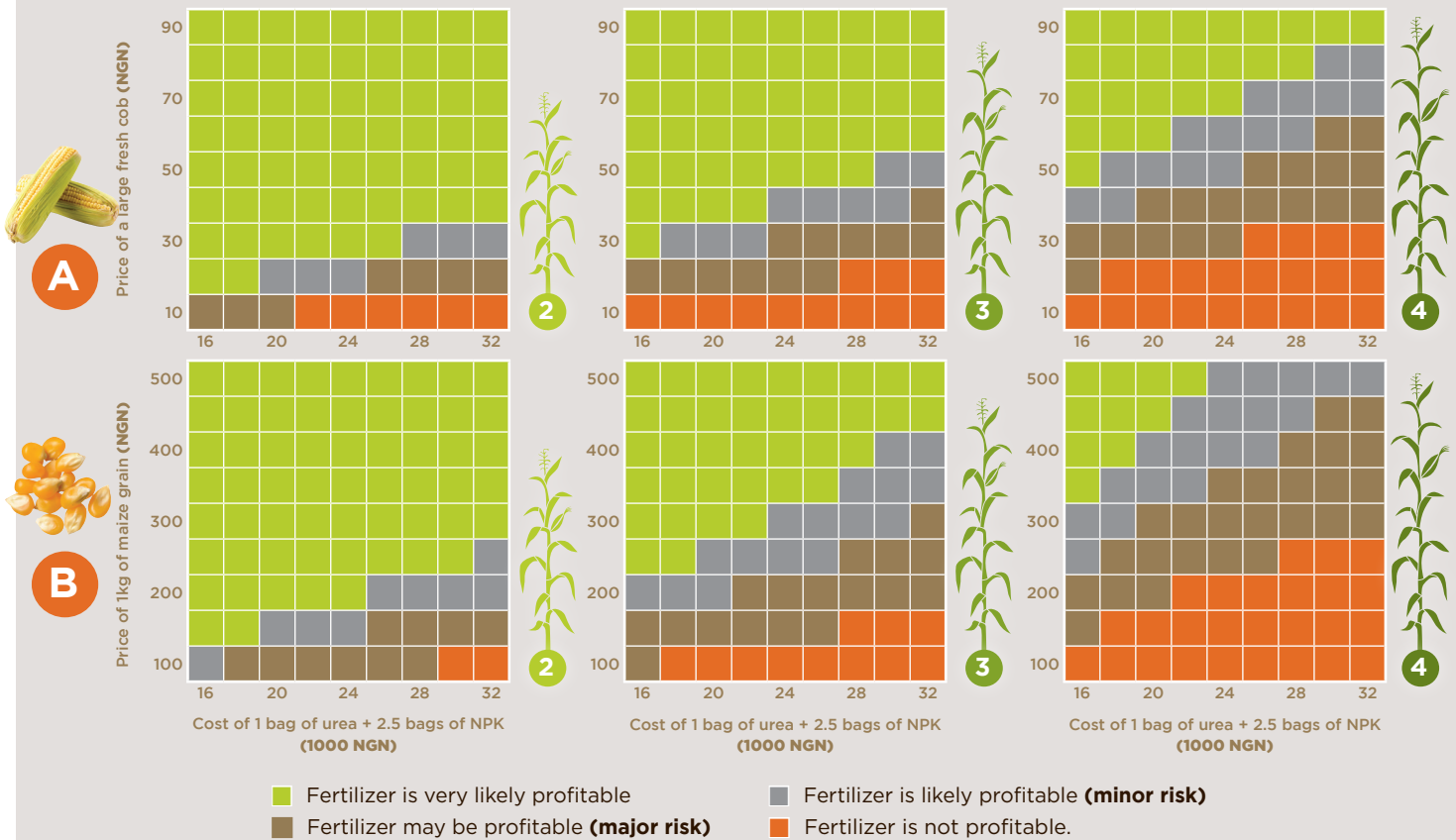
- Plant your maize in rows that are 1 m apart between the rows of cassava
- If your field is ridged, plant your maize mid slope
- Plant your cassava and your maize at the same time

Based on your knowledge of this field, how do you expect your maize to look at tasseling if grown without fertilizer?



Note: We recommend planting two maize seeds per hill and thinning to one plant per hill after 1-2 weeks. Alternatively, you can plant 1 seed per hill and gap missing plants at 3-5 days after planting.

Evaluate profitability by comparing the price of your maize produce against the cost of the fertilizer. Use the diagram according to the expected maize performance. If you will sell your maize as fresh cobs go to **A**. If you will sell your maize as dry grain, go to **B**.



Recommended rates and fertilizer application if profitable

Fertilizer rate on the basis of one acre

We recommend applying 42 kg N, 8 kg P and 15 kg K per acre. This rate equals 2.5 bags (of 50 kg) of NPK 15:15:15 and 1 bag (of 50 kg) of urea for 1 acre.



+



+



At planting

- Apply 2.5 bags of NPK on 1 acre
- Make a hole 5 cm from the maize seed
- If you have ridges, make the hole on the upper side
- Make the hole about 5 cm deep
- Spread the NPK equally into each hole
- Cover with soil

3 weeks after planting

- Apply half bag of urea on 1 acre
- Make a shallow furrow 10 cm away from the maize hills
- If you have ridges, make the furrow on the upper side
- Spread the urea evenly
- Cover with soil

5 weeks after planting

- Follow the same procedure as at 3 weeks.

Note: fertilizer will also increase your cassava root yield by at least 1 tonne per acre.